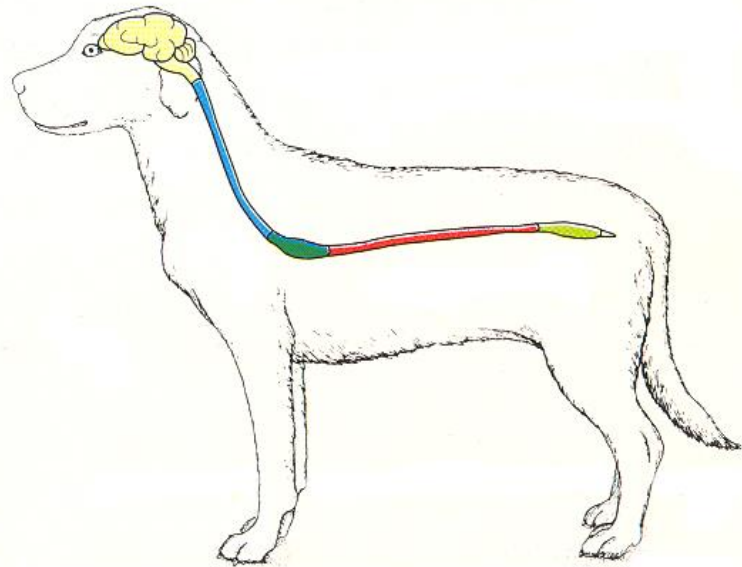


Bewegungsapparat

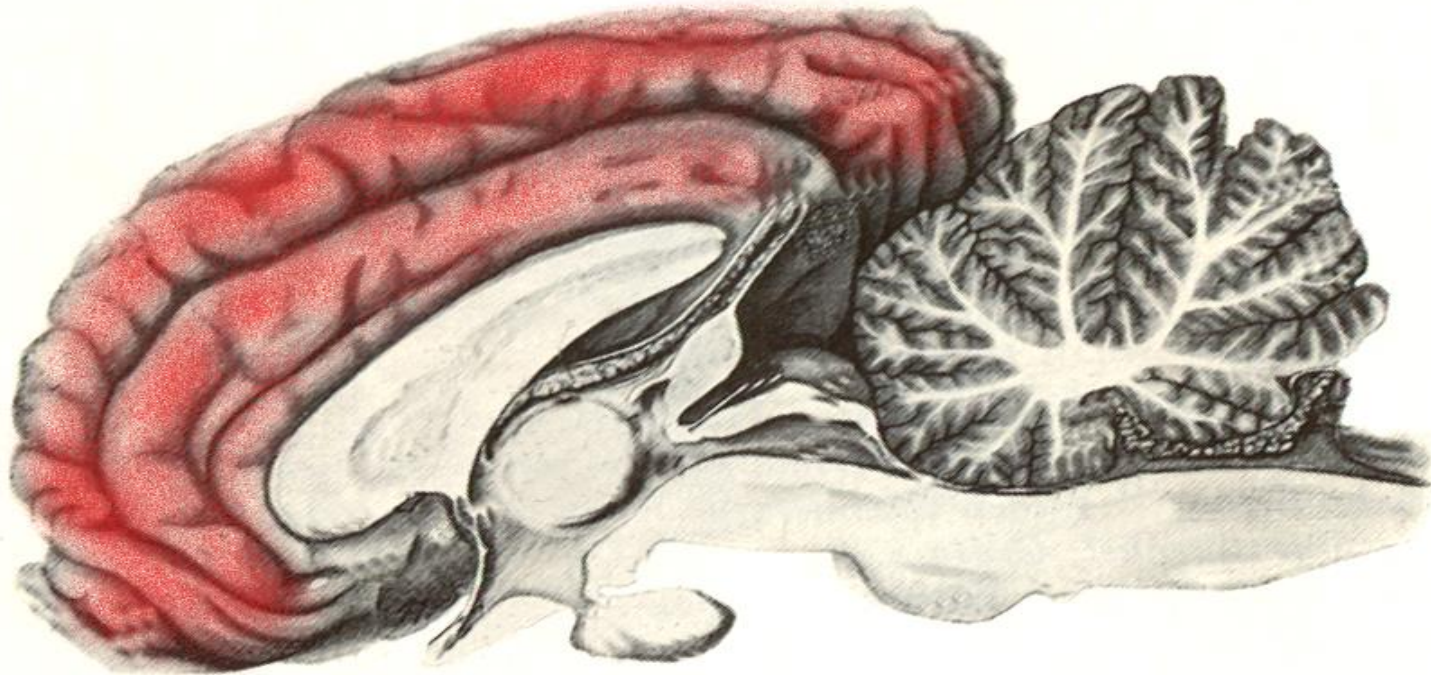
Stephan Neumann

Zusammensetzung

- Gehirn
- Rückenmark
- Nervenwurzel
- peripherer Nerv
- motorische Endplatte
- Muskulatur
- Sehne
- Gelenke
- Bänder
- Knochen

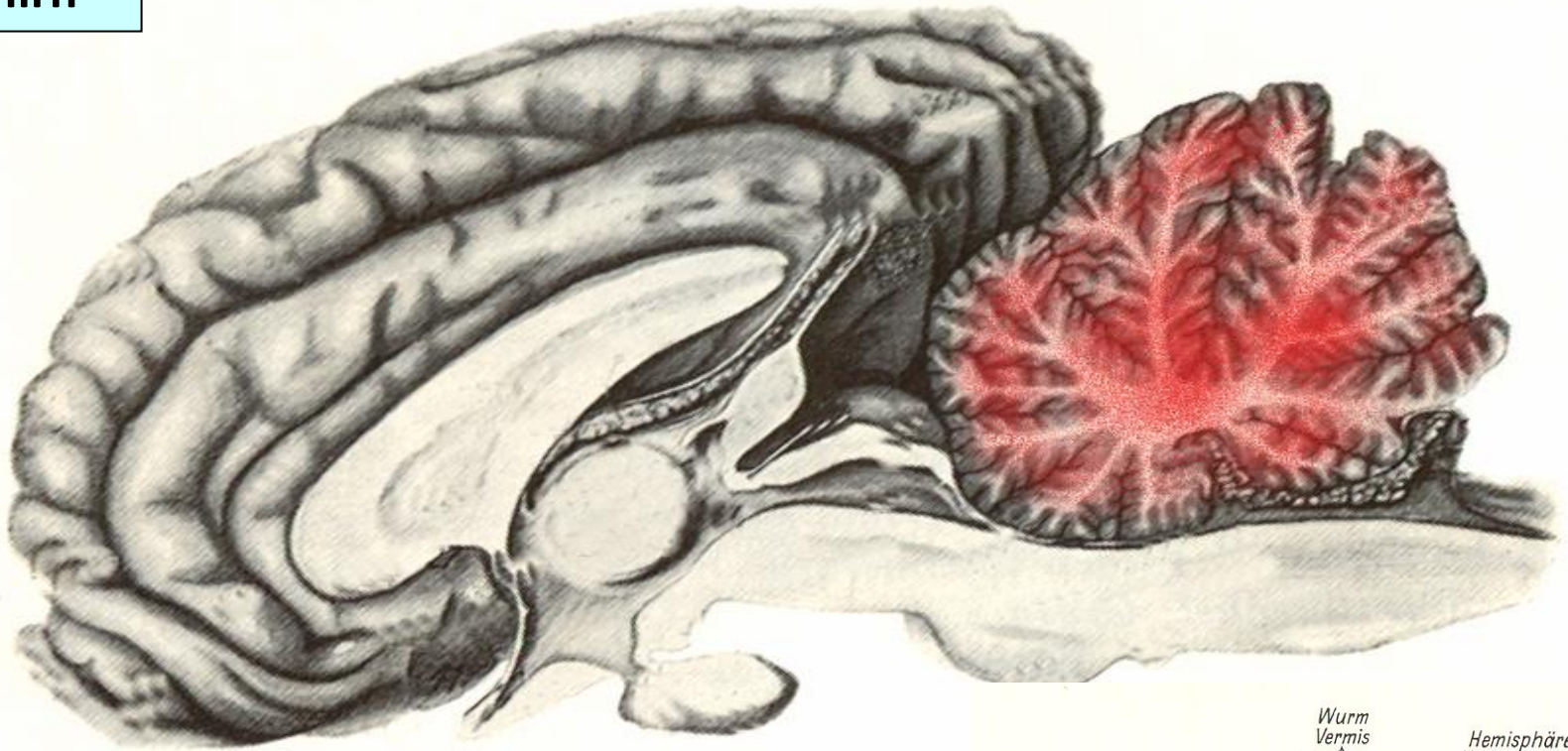


Großhirn

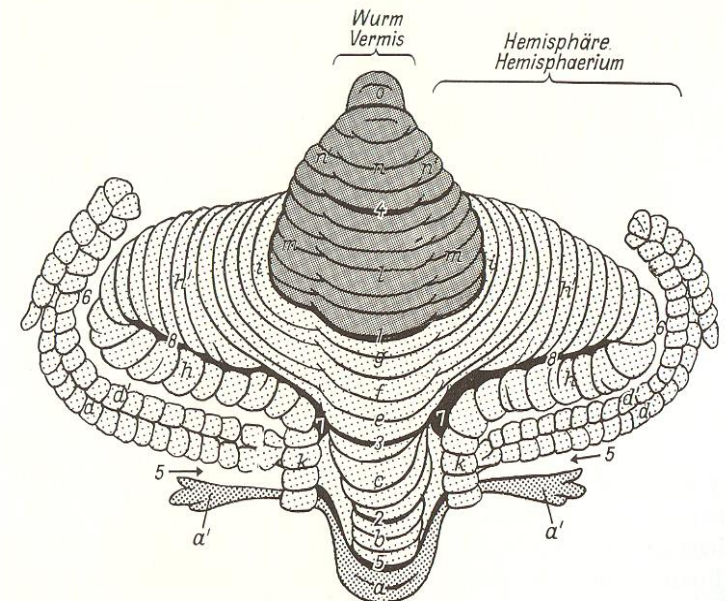


- 2 Hemisphären
- Gyri & Sulci

Kleinhirn

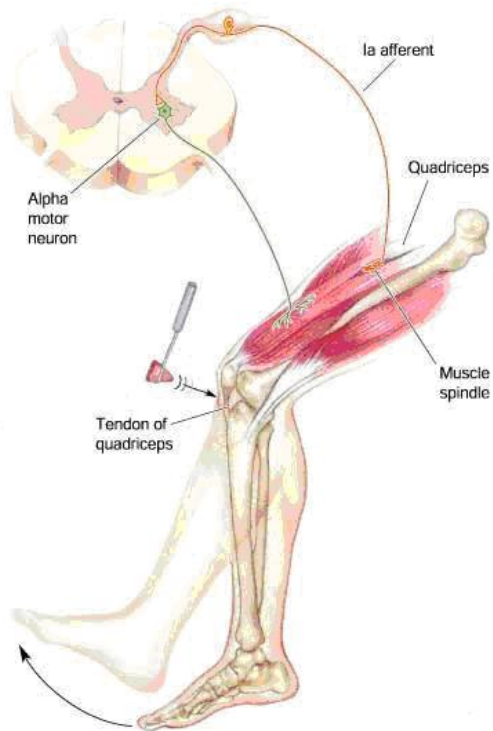


- 2 Hemisphären
- 1 Vermis
- Arbor vitae

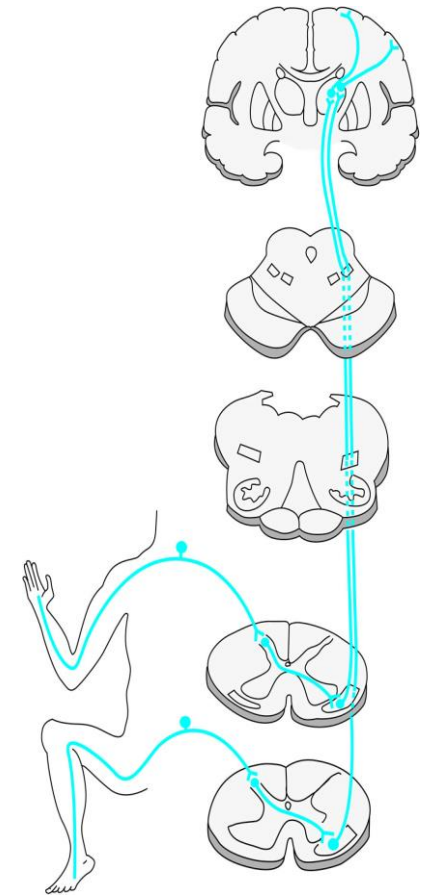


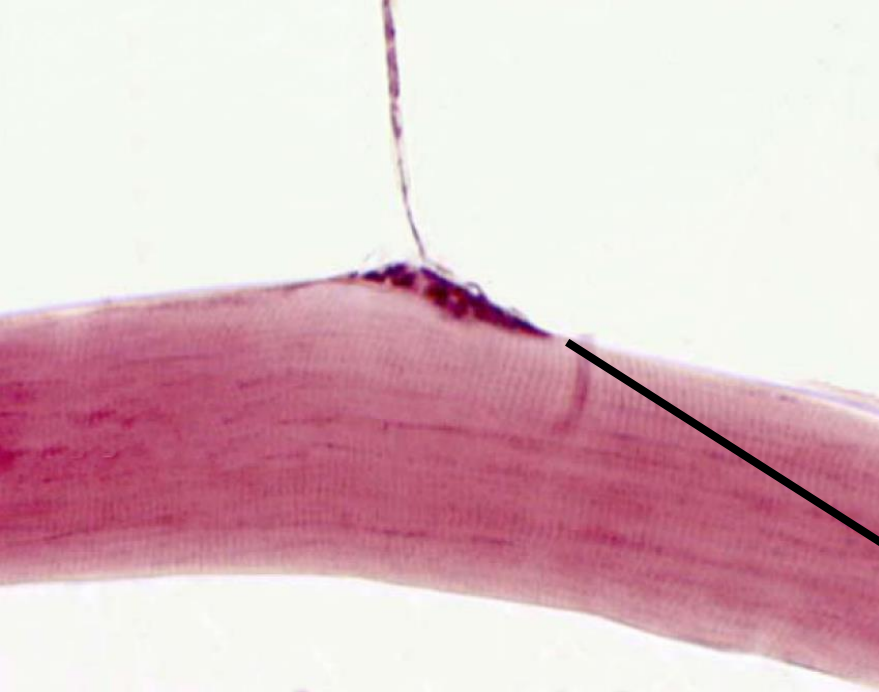
oberes und unteres motorisches Neuron

- unteres
 - spinale Reflexe sind betroffen

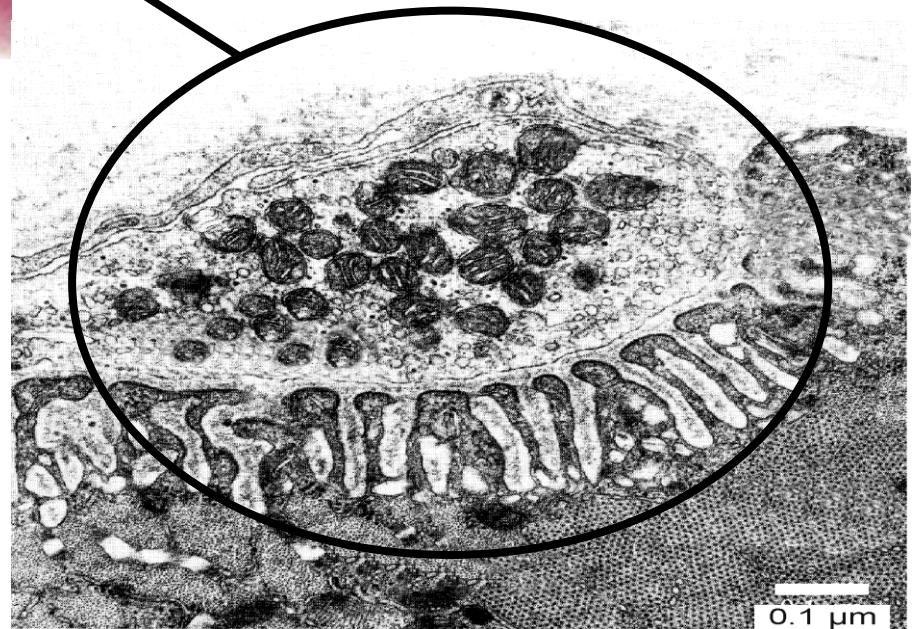


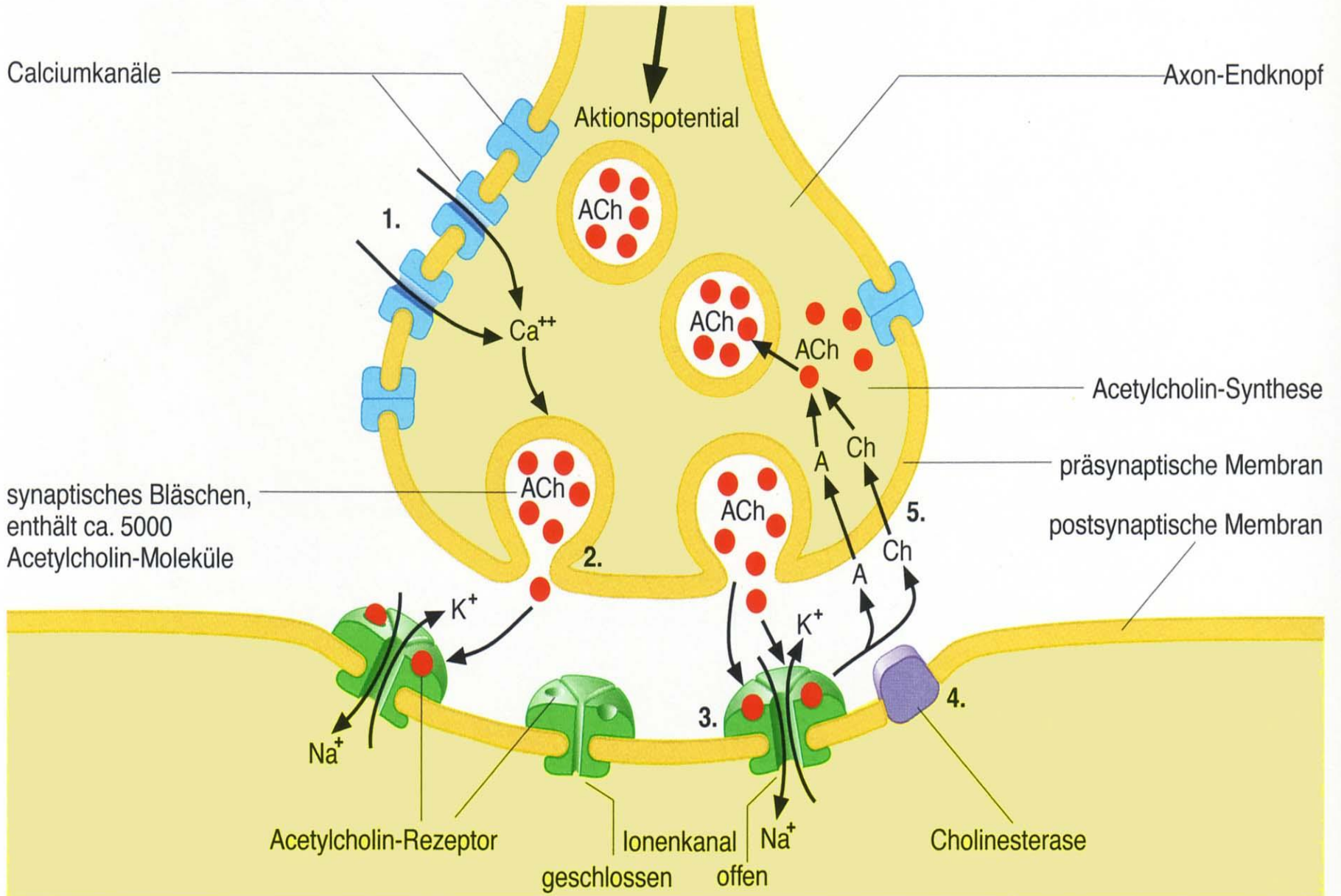
- oberes
 - Stellreflexe sind betroffen



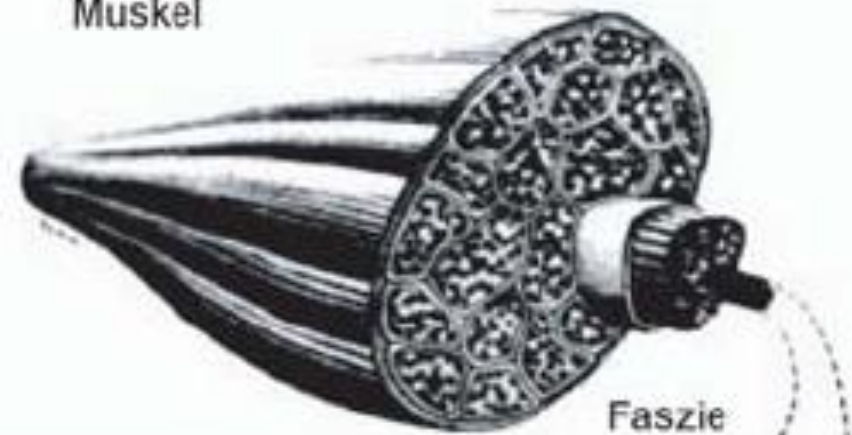


- ✓ Axon
- ✓ Telodendron
- ✓ präsynaptische Membran
- ✓ synaptischer Spalt
- ✓ postsynaptische Membran

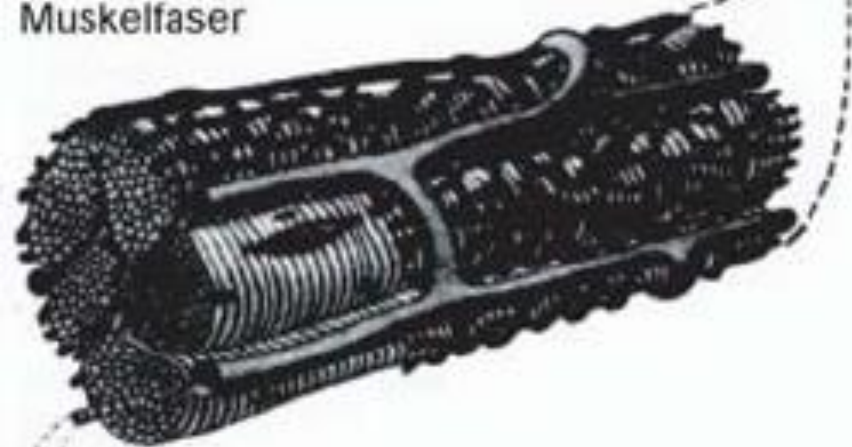




Muskel



Muskelfaser



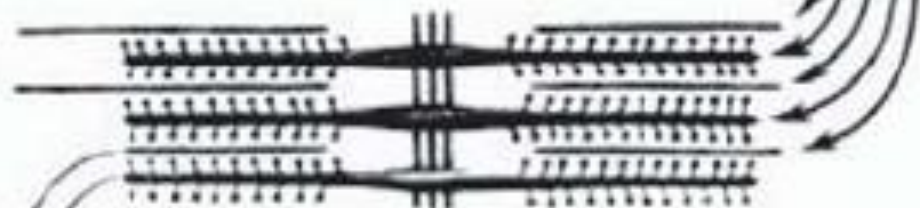
Myofibrille



Myofibrille



Myofilamente

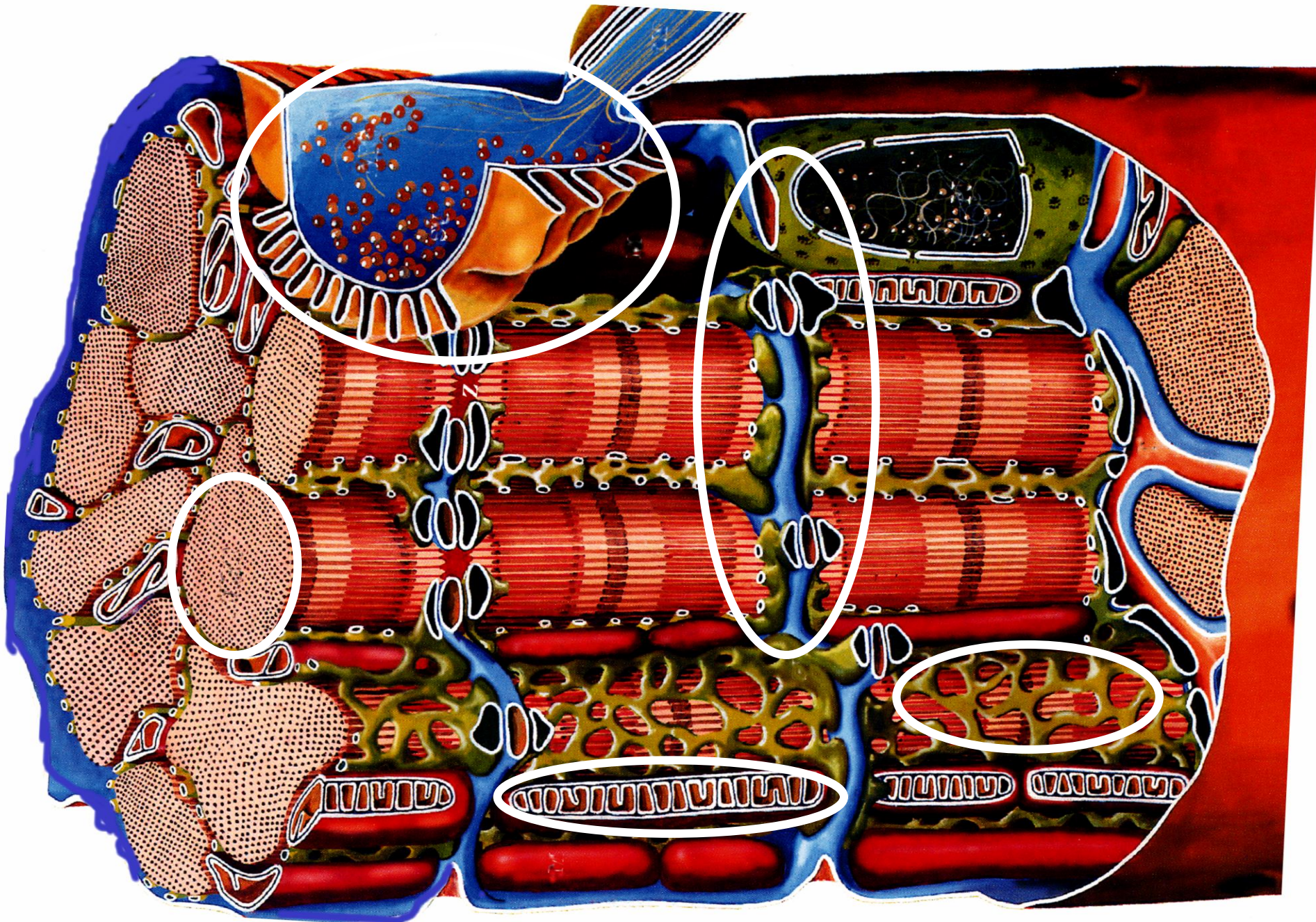


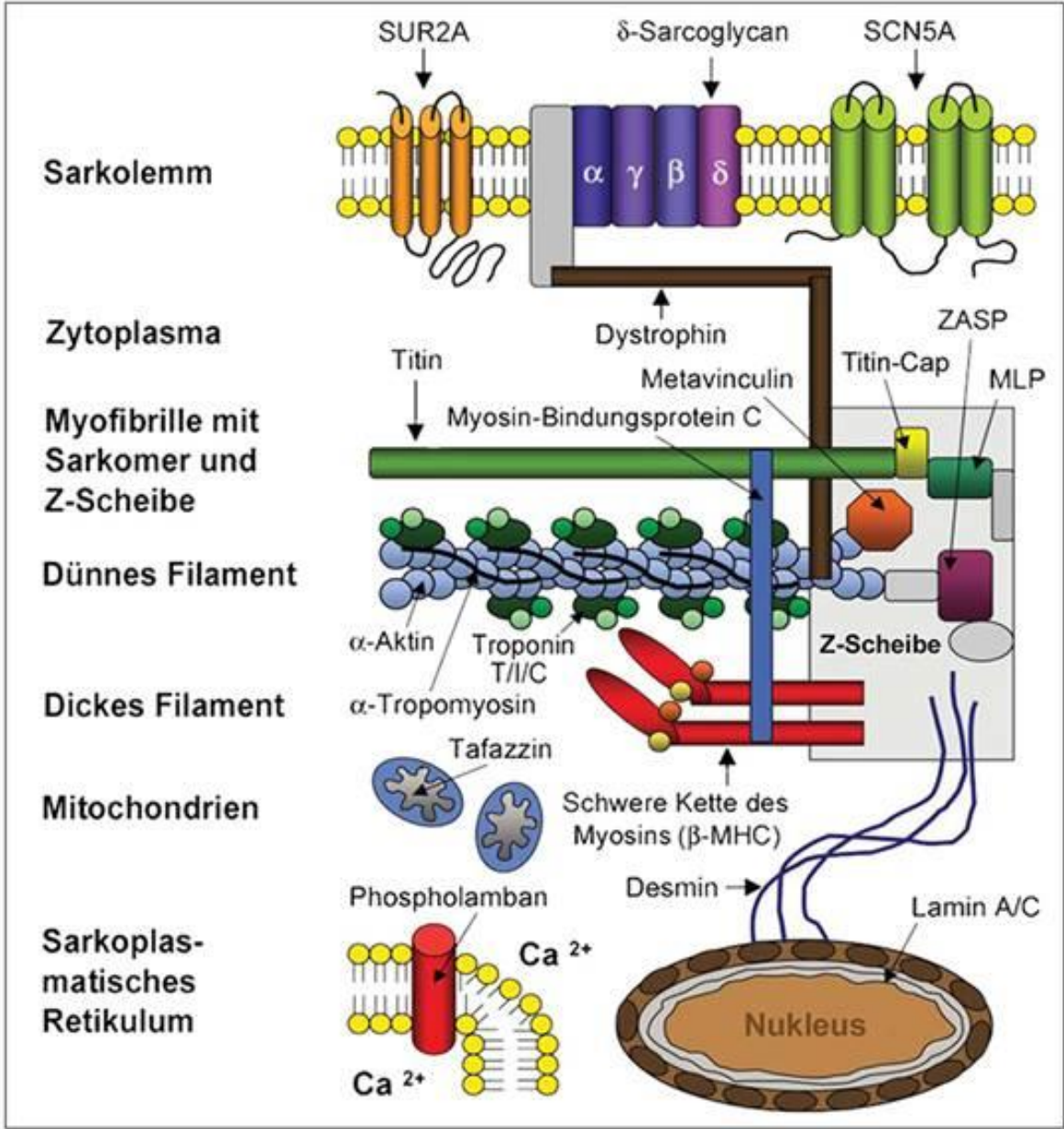
Myosin

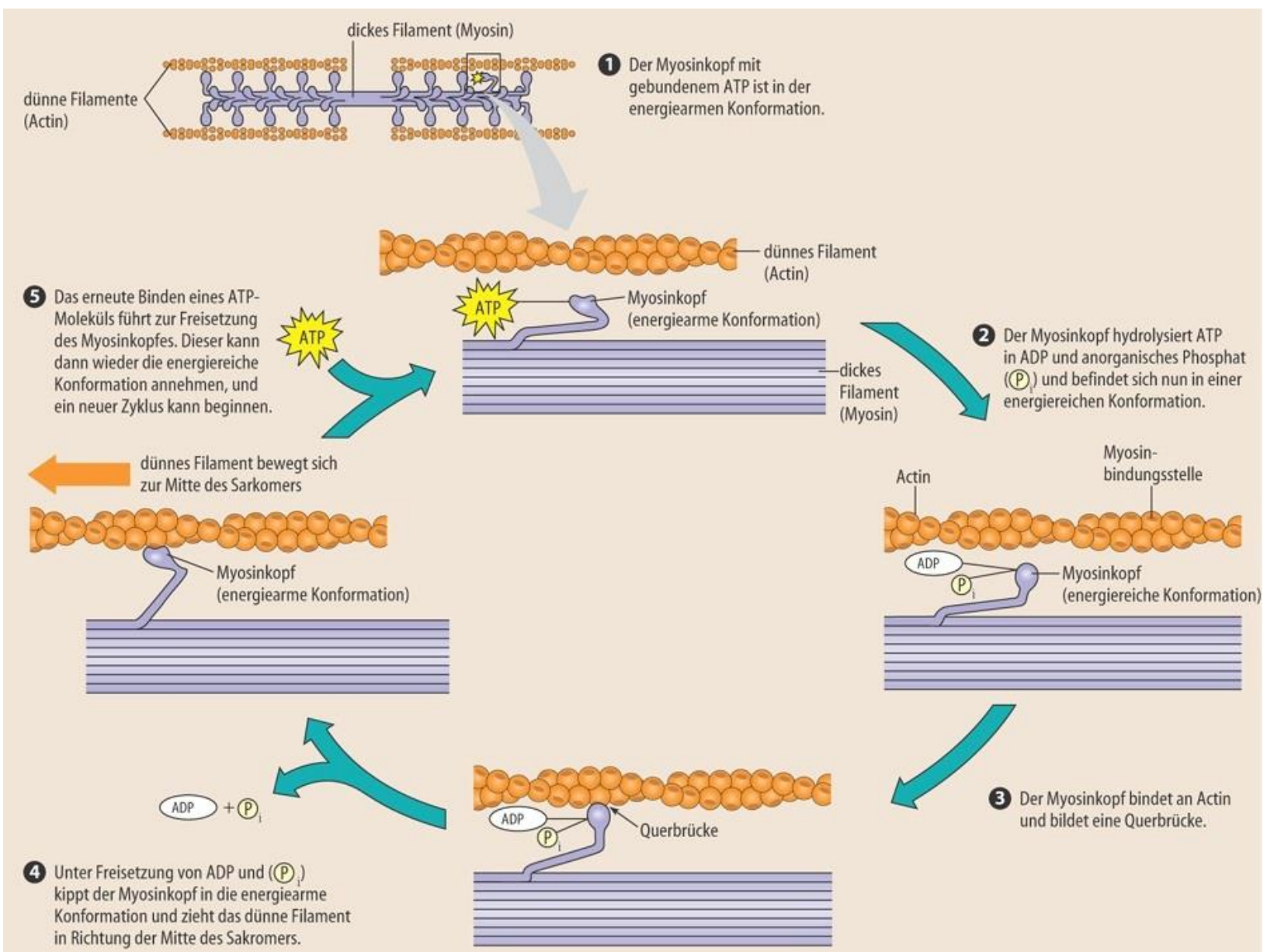


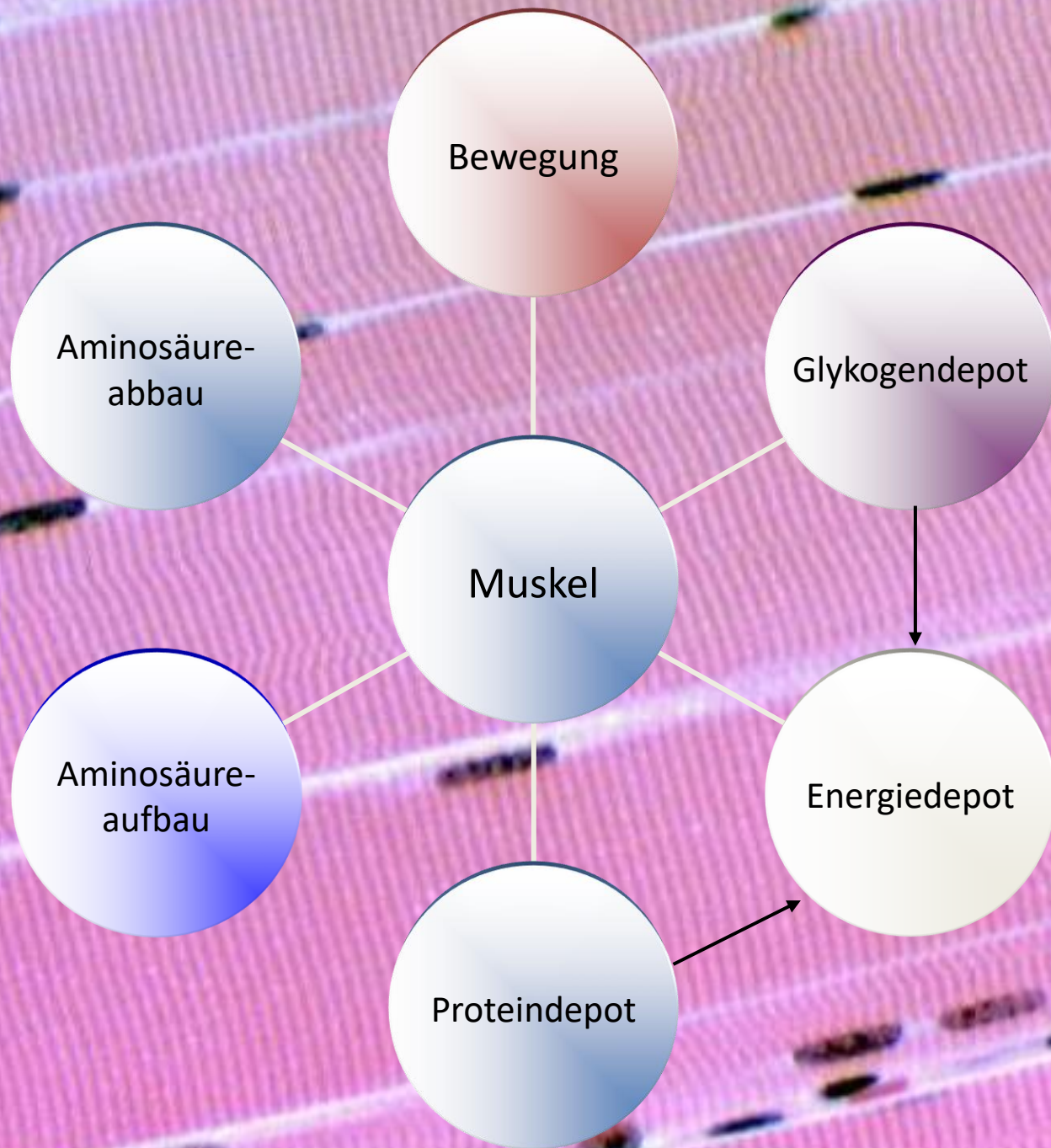
Actin

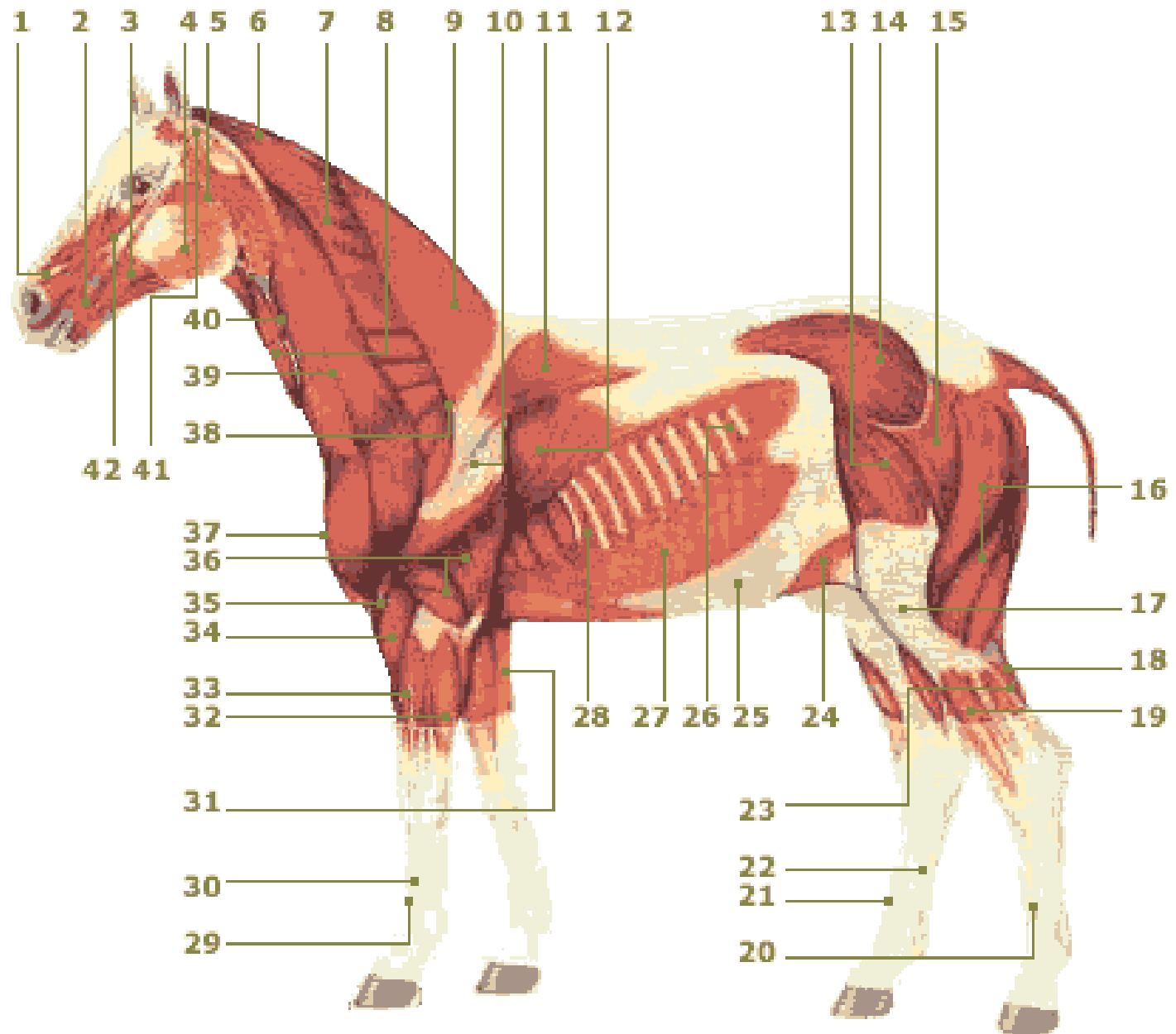


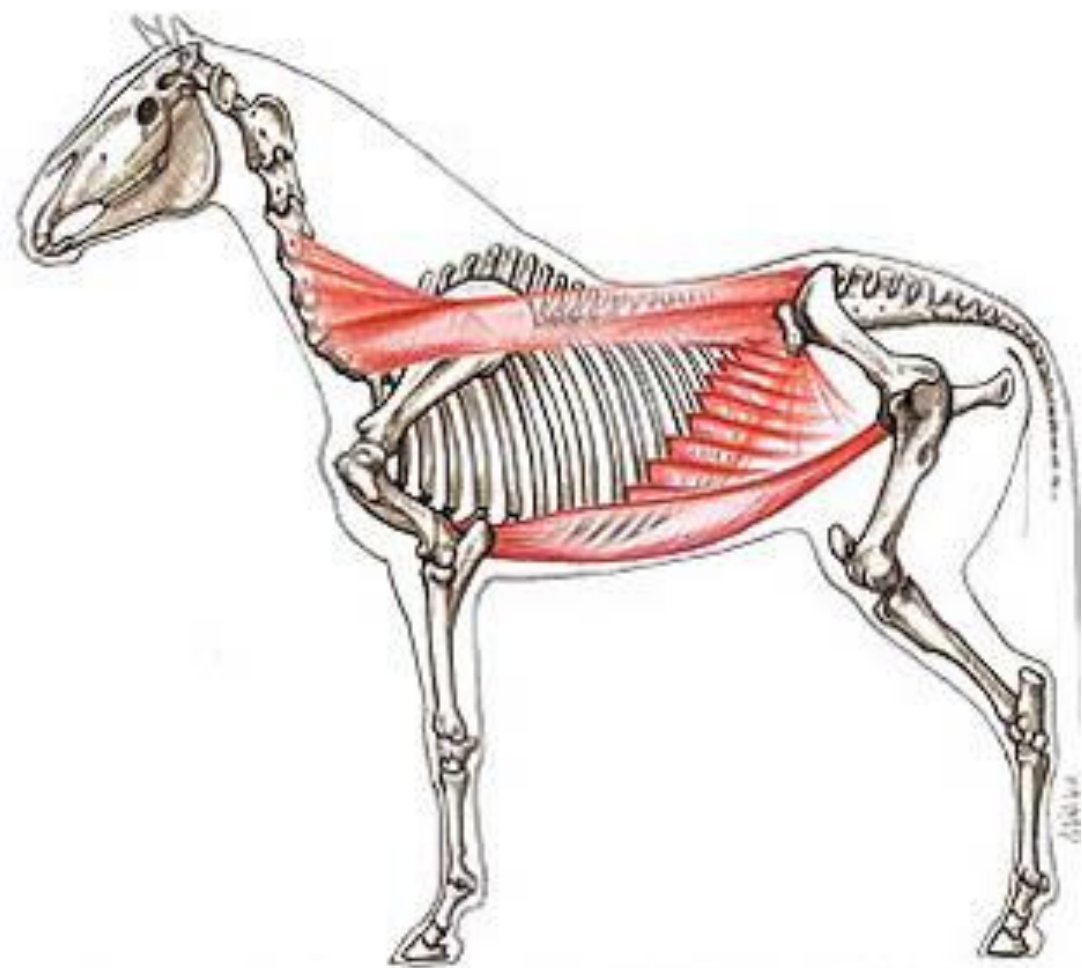


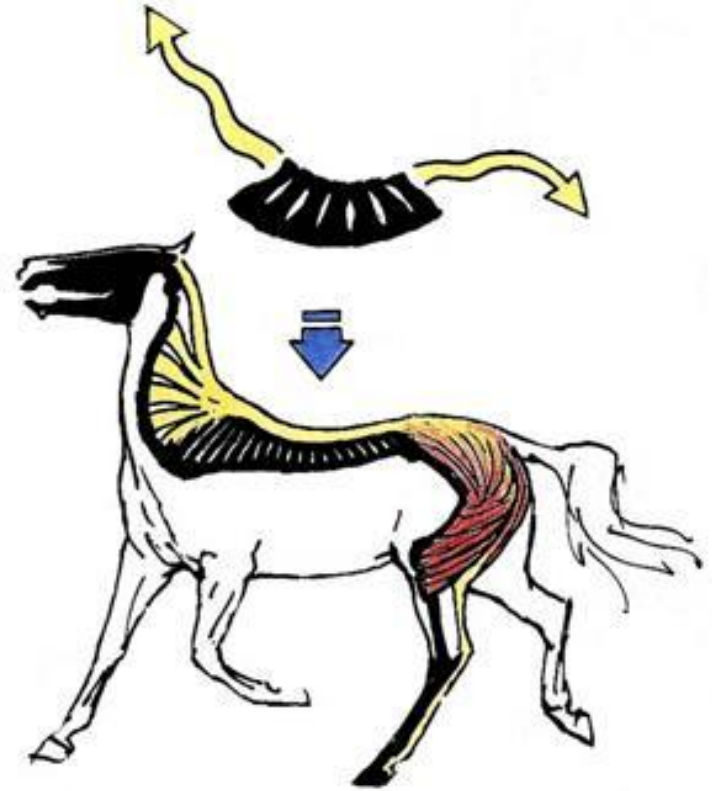
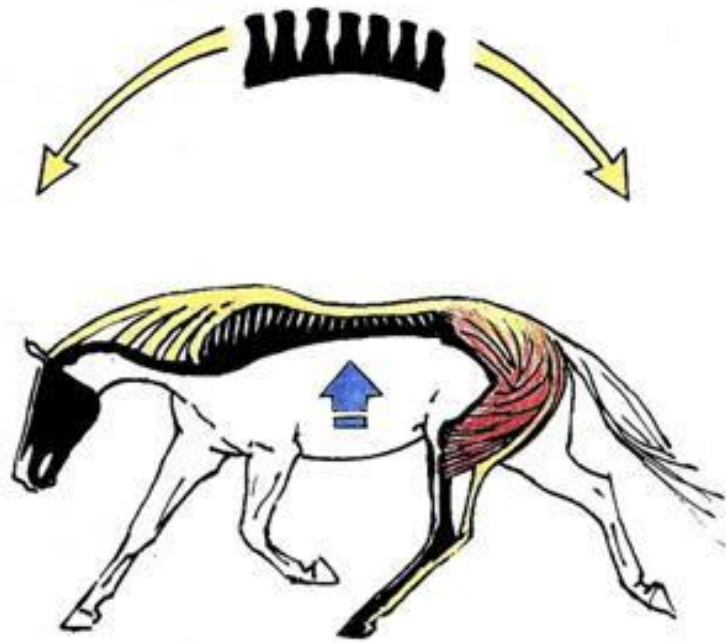


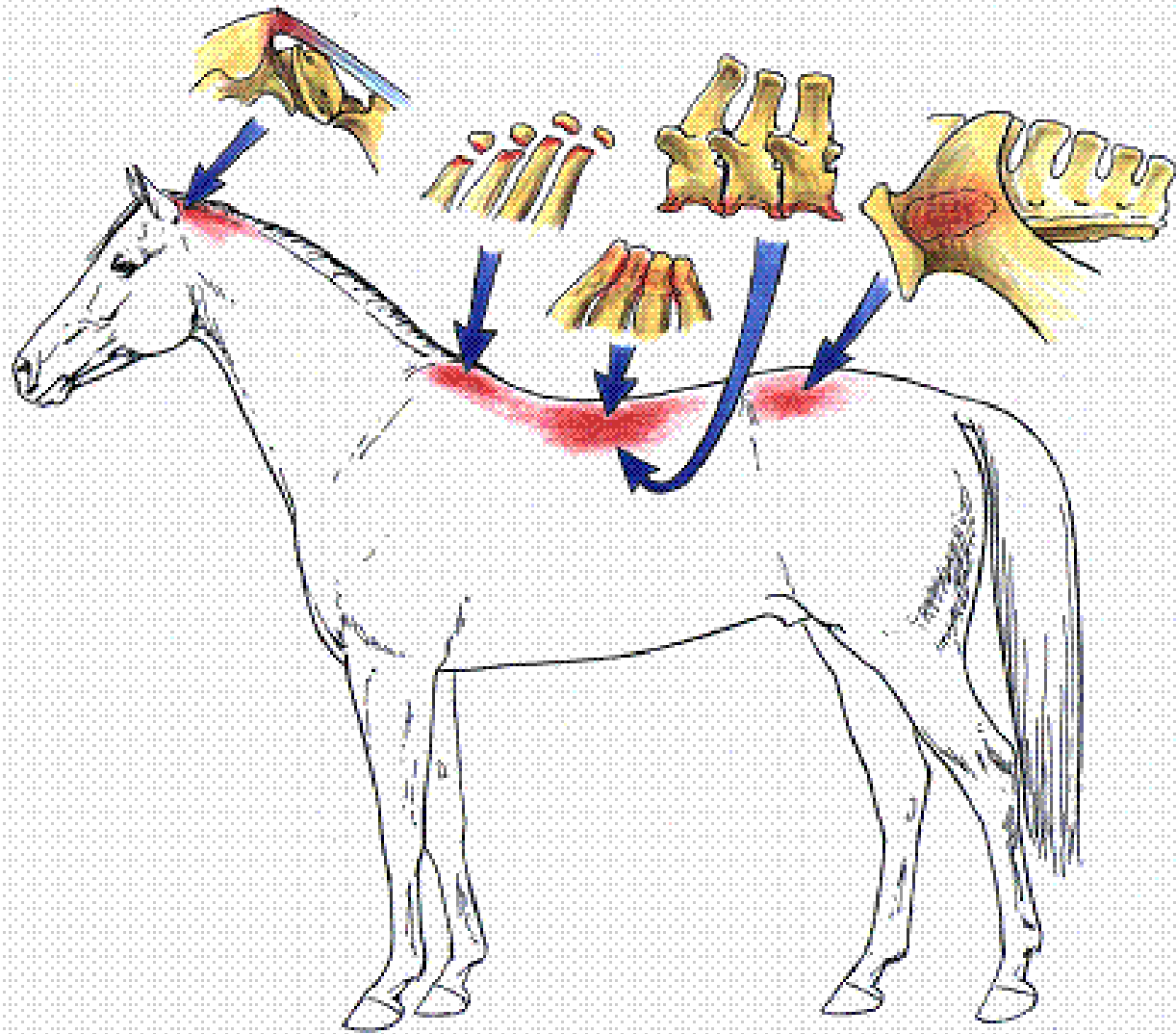


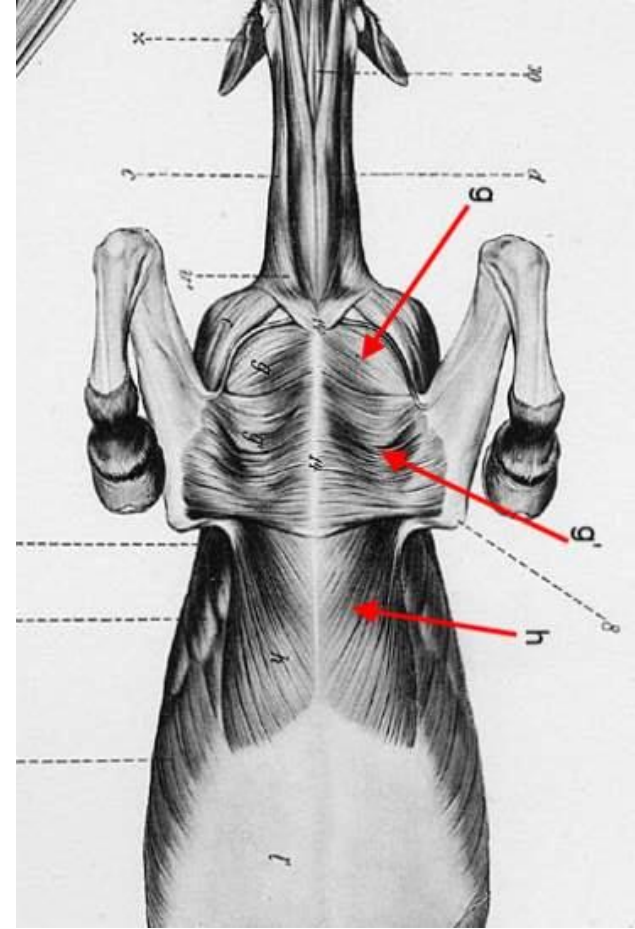
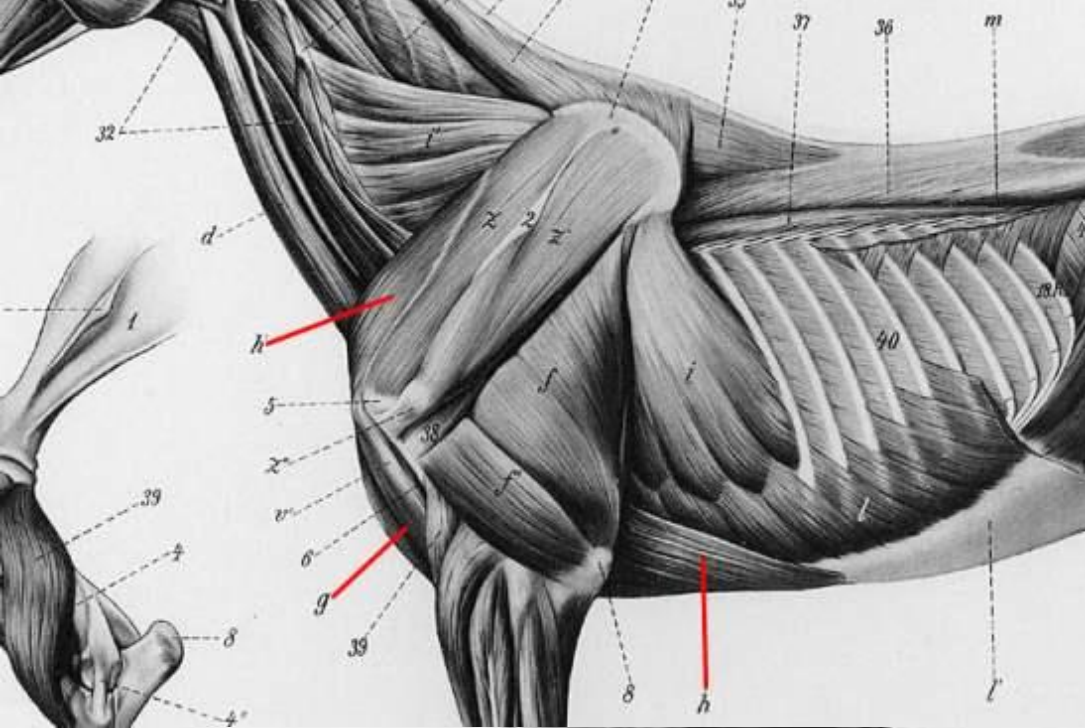






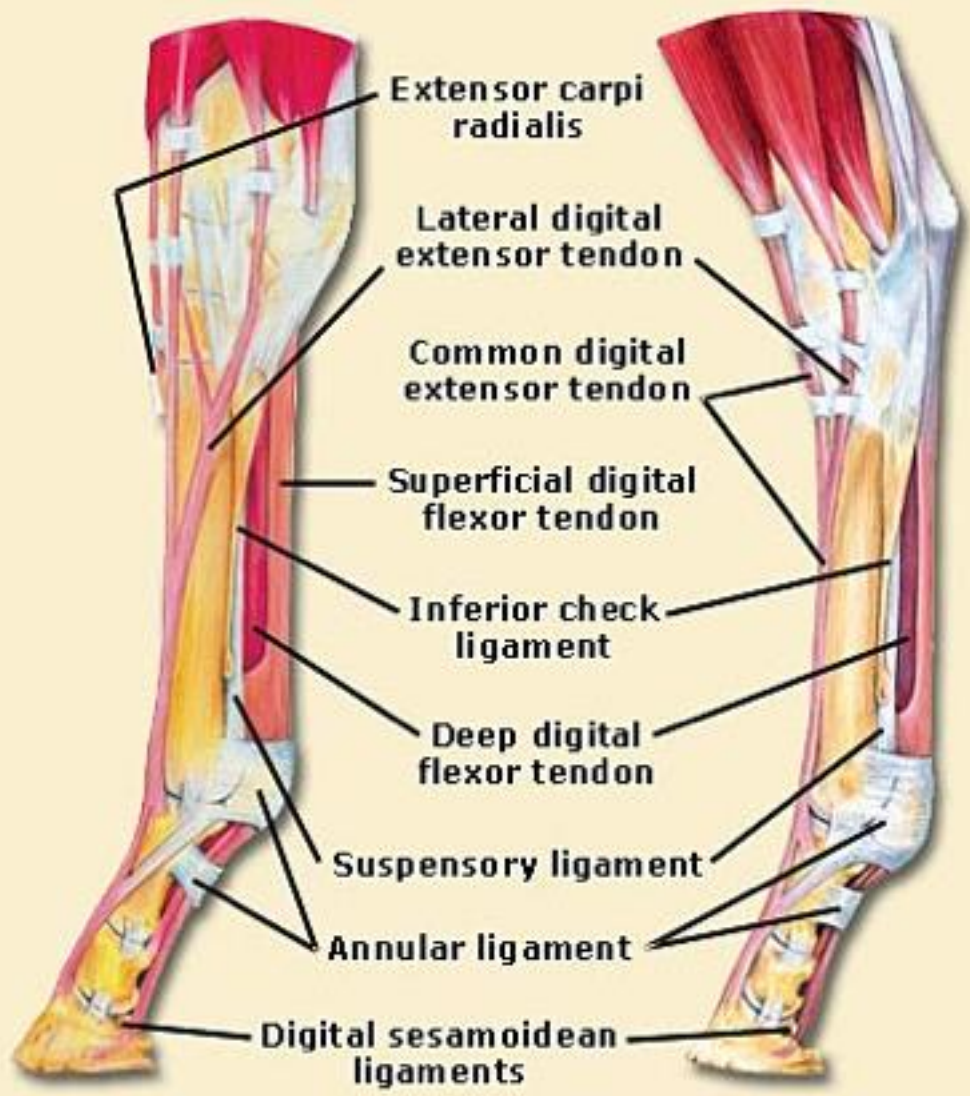


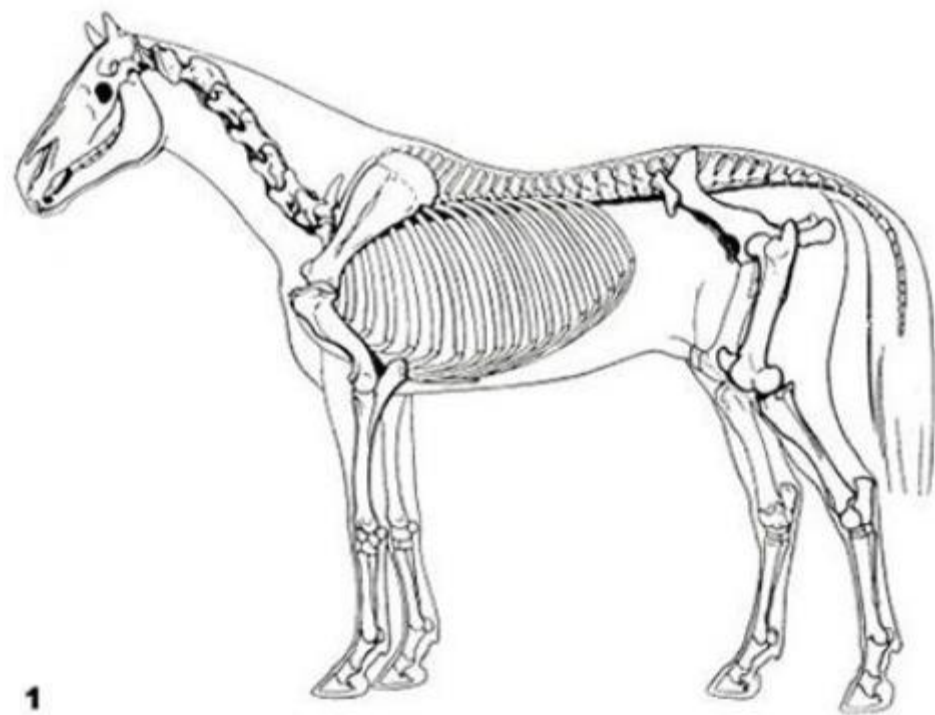




FORELIMB

HINDLIMB





1







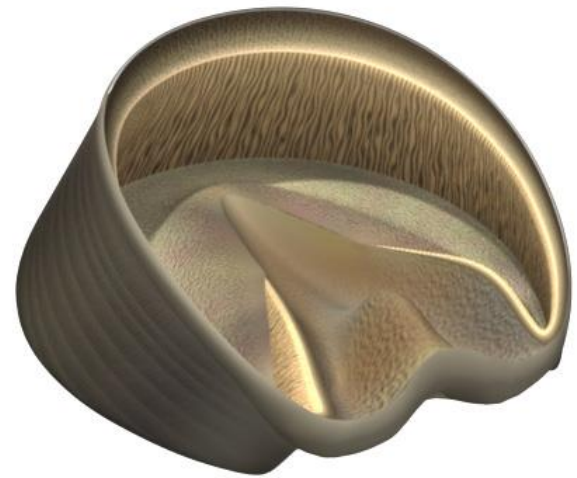
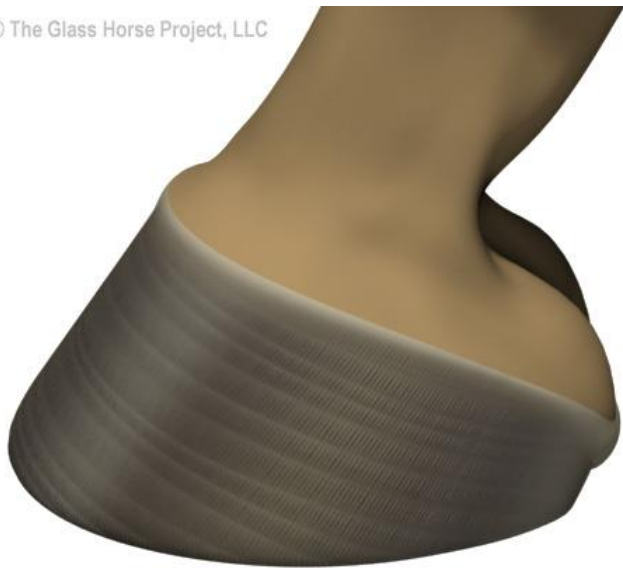




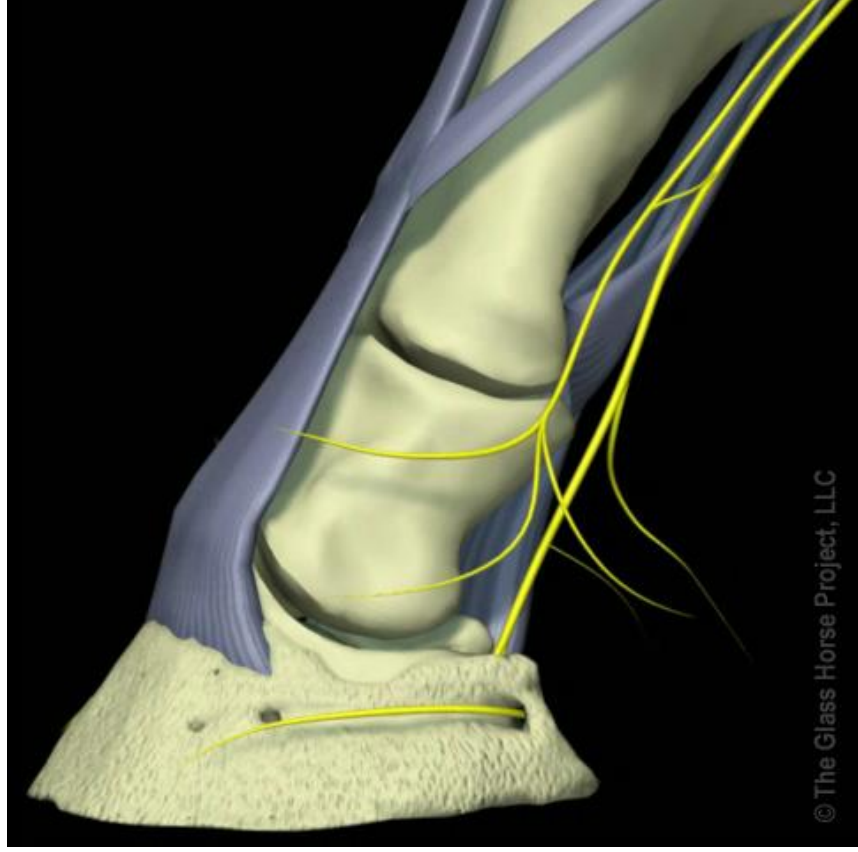




© The Glass Horse Project, LLC

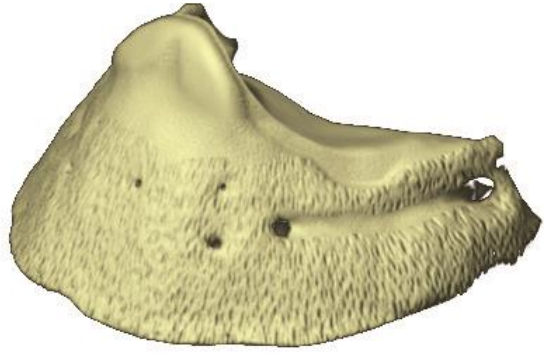


© The Glass Horse Project, LLC

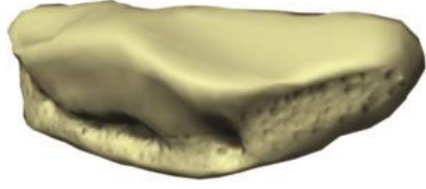




© The Glass Horse Project, LLC



© The Glass Horse Project, LLC



© The Glass Horse Project, LLC



© The Glass Horse Project, LLC



© The Glass Horse Project, LLC